

Your Green Energy Manufacturer

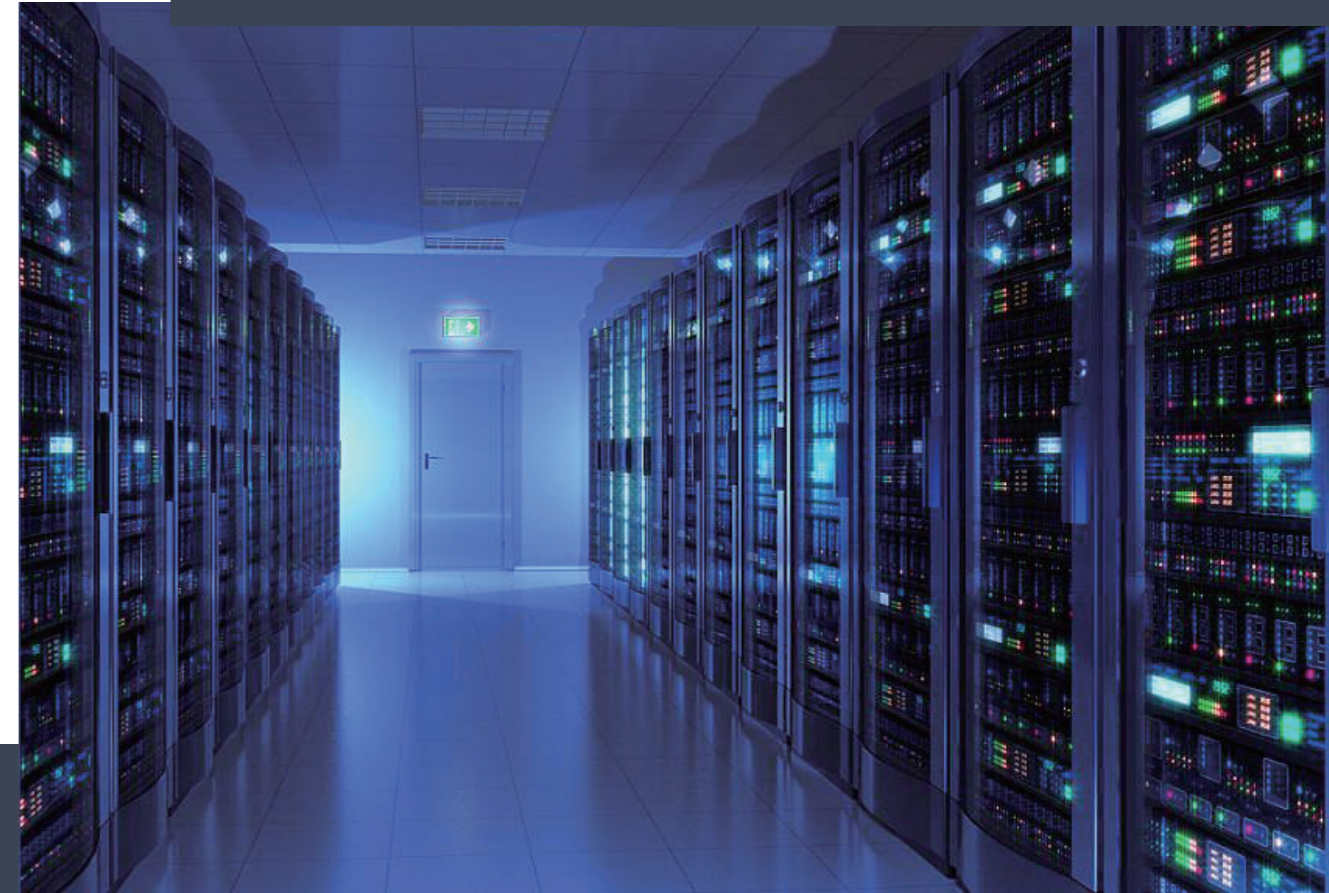
www.kowint.com

DATA CENTER & ENTERPRISE

Power Supply Solutions



Product Specifications



2023

KOWINT ENERGY

Add: 2203, Block B, ZhiHuiJiaYuan, 76 BaoHe Road, BaoLong Community BaoLong Street, LongGang District, ShenZhen, China

**Your Green Energy
Manufacturer**

Official email:
info@kowint.com

Add:
2203, Block B, ZhiHuiJiaYuan, 76 BaoHe Road, BaoLong Community
BaoLong Street, LongGang District, ShenZhen, China

Product Specifications



High Voltage DC DPS Star series

SD310&SD510

- ✓ Safety & Reliability
- ✓ Flexibility
- ✓ Efficiency
- ✓ Electromagnetic Compatibility
- ✓ Operational Simplicity

Your Green Energy Manufacturer



SD310



SD510

Safety & Reliability

Power segments are independent, allowing for easy redundancy or backup integration. Isolated failures don't disrupt the entire system.

Flexibility:

The system's modular nature makes customization and optimization seamless. Adaptations or updates don't mandate a full system overhaul.

Efficiency:

Reduced line loss elevates system efficiency. Proximity of power supply to load ensures voltage stability.

Electromagnetic Compatibility:

Decentralized units simplify electromagnetic interference suppression, ensuring smooth performance even with variable load conditions.

Operational Simplicity

Quick start-stop, peak-shifting capabilities, and straightforward automation.

Model	DPS-SD310	DPS-SD510
Power	3000~10000	
Input/Output	Two 220VAC inputs, One 220VAC output, Two 240VDC outputs	
Input		
Input Voltage	220VAC Single phase	
Voltage Range	176~300VAC	
Frequency Range	40~70 Hz	
Power Factor	≥ 0.99	
Output		
Output Current	10~35A	
Rated Output Voltage	240VDC Single Circuit	
Output Voltage Range	204~288VDC	
Current Adjustable Range	10%~110% infinitely adjustable	
Voltage Accuracy	± 0.5%	
Peak-peak Noise Voltage	≤2%	
Loading Effect	≤2%	
Efficiency	≥ 94 %	
Current Balance	≤± 3%	
Battery Charge Current	0.2C (Typical)	
Battery		
Battery Type	240V 15AH (2U)	240V 27AH (4U)
Charging Current	3A±10%	6A±10%
Charging Time	5 h	
General Parameters		
Cabinet W*D*H(mm)	440*800*133(3U)	440*800*222(5U)
Cabinet(Kg)	20	25
Module(Kg)	33-60	
Storage and transportation temperature	-25~55°C	
Operating temperature	0~45°C	
Working humidity	<95 % without condensation	
Working altitude	<2000m	
work noise	< 55dB @ 1 m	



AC Online DPS
Star Series
SA406&SA610

- ✓ Highly compatible
- ✓ Reliability
- ✓ Wide range of application scenarios
- ✓ Stable power supply



SA406



SA610

Highly compatible

Kowint DPS is designed with the diverse needs of today's power grids and data centers in mind. Given that most equipment operates on AC power, our AC On-Line DPS connects directly to standard AC power sources, ensuring broad compatibility with various types of equipment.

Reliability

You can trust the Kowint DPS to deliver uninterrupted power during grid disturbances or instability. With rapid switching times in milliseconds, it guarantees that connected devices stay running during power glitches, minimizing downtime and potential setbacks.

Wide range of application scenarios

From expansive data centers to intricate corporate infrastructures, Kowint DPS offers a dependable power solution. Regardless of your requirements, our DPS lineup meets them, ensuring unbroken power to a diverse range of equipment and setups.

Stable power supply

Kowint DPS incorporates advanced power stabilization technology that consistently fine-tunes its output, guaranteeing a stable, high-grade power feed for linked devices at all times.

Product Specifications

Model	SA406	SA610
Power	6kva/6kw	10kva/10kw
Input		
Input Voltage	220VAC	
Voltage Range	120~280Vac @ (0~50%)Load 160~280Vac @ (50~75%)Load 176~280Vac @(75~100%)Load	
Frequency Range	46Hz ~ 54 Hz @ 50Hz System 56Hz ~ 64 Hz @ 60Hz System	
Power Factor	≥ 0.99	
Output		
Output Voltage	208/220/230/240VAC	
Voltage Accuracy	± 1%	
Frequency Range (Synchronization Range)	46Hz ~ 54 Hz @ 50Hz System 56Hz ~ 64 Hz @ 60Hz System	
Frequency Range (Battery mode)	50 Hz ± 0.1 Hz 或 60Hz ± 0.1 Hz	
power factor	1	
peak factor	3:1 max	
harmonic distortion	≤ 1 % @ 100% linear load; ≤ 4 % @ 100% non-linear loads	
switching time	AC ↔ Battery Invert ↔ Bypass	0 ms 0 ms
Input/Output Forms	1 input and 2 outputs or 2 inputs and 2 outputs	
Efficiency		
Utility mode	> 95%	
Battery Mode	> 93%	
Battery		
Battery Type	230V lithium battery	
battery capacity	15AH/27AH	
Battery Net Weight	30-60	
General		
Chassis Dimensions D*W*H (mm)	750*440*177(4U)	750*440*266(6U)
Net weight of mainframe	34	38
Storage temperature	-25~55°C	
Operating Temperature	0~45°C	
Operating humidity	<95 % without condensation	
Operating altitude	<2000m	
Operating noise level	< 55dB @ 1 m	



Modular UPS

Galaxy Series

G240k & G300k

- ✓ Efficient and Intelligent
- ✓ Green Technology
- ✓ Stable and Reliable

Smart Design

Leverage intelligent technologies with an enhanced design for utmost efficiency.

Dynamic Sleep Technology

Choose dynamic hibernation based on power usage, supporting rotational rest, and effectively prolonging device life.

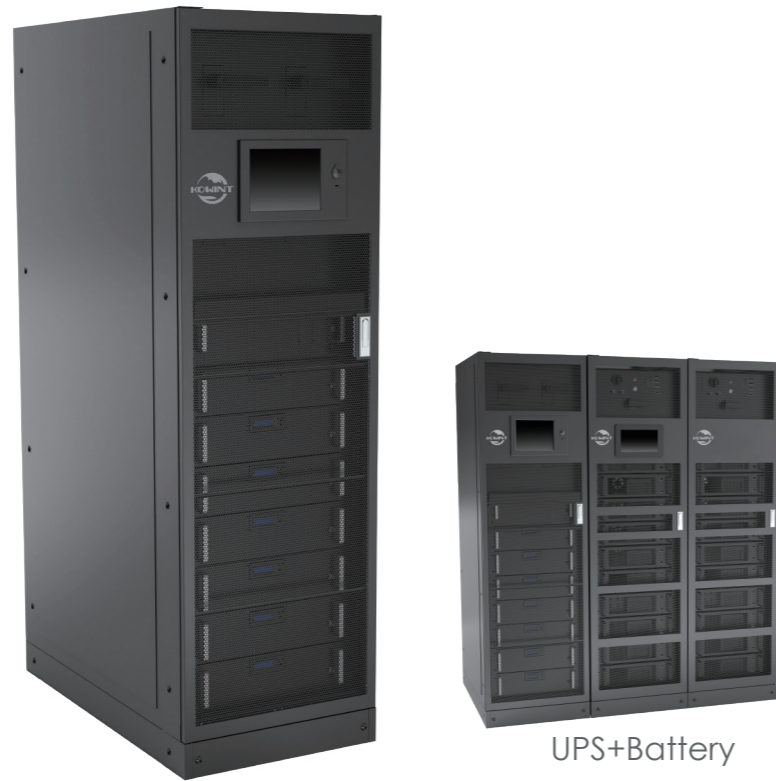
Eco-Forward Solutions

Champion eco-friendly, sustainable tech solutions.

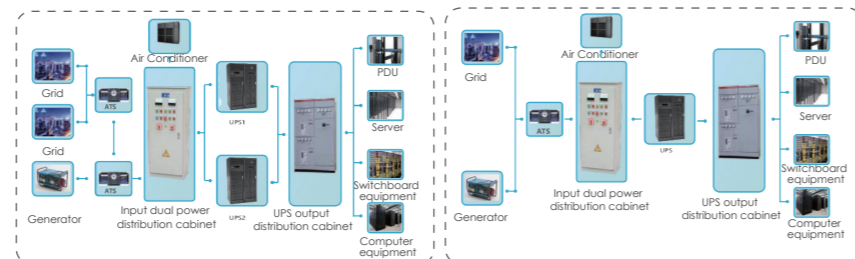
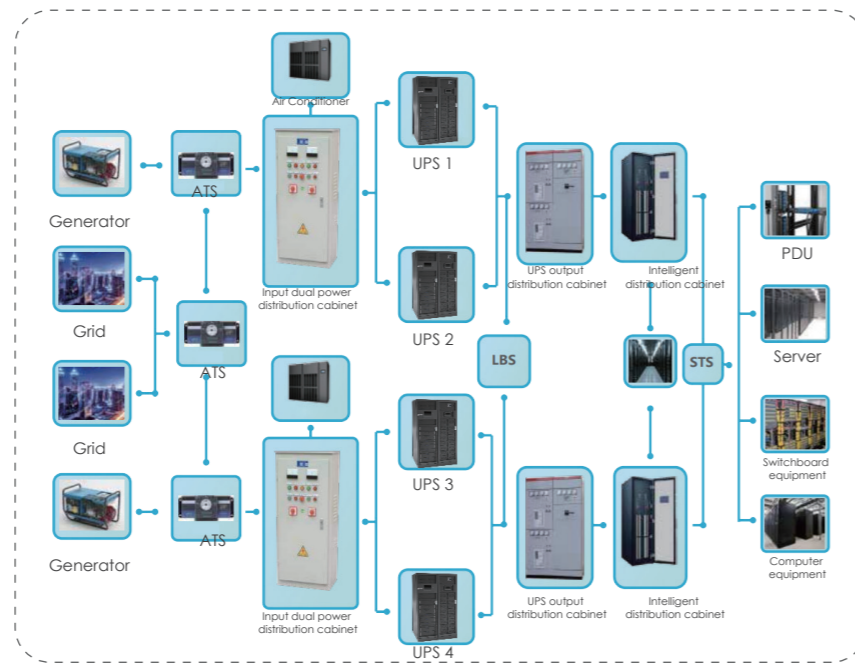
Trustworthy and Sturdy

Supply dependable, durable products ensuring consistent business flow.

Your Green Energy Manufacturer



UPS+Battery



Product Specifications

Model	G240K	G300K
type/Rated Capacity	240kVA	300kVA
Cabinet Type	7/12 Module Cabinet	
Optional Power Module	20KVA/25kVA	
Optional Capacity	80~240/100~300	
Main Circuit		
Layout Manner	3 phases + N lines + PE	
Rated Voltage Rated Frequency	380/400/415Vac (line voltage)	
Voltage Range	50/60Hz304Vac ~ 478Vac (line voltage) Full-load; 304Vac ~ 228Vac(line voltage) Load derating linearly from 80% ~100%	
Frequency Range	40Hz~ 70Hz	
Power Factor	>0.99	
Harmonic Content	THDi<3%(Linear full-load); THDi<5%(Non-linear load)	
Bypass		
Rated Voltage	380/400/415Vac (line voltage)	
Voltage Range	Default to -20%~ +15%; Settable, Upper limit: +10%,+15%,+20%,+25%; Lower limit: -10%,-15%,-20%, -30%,-40%	
Frequency Range	Rated Frequency 50/60Hz; Settable (+1Hz+3Hz+5Hz)	
Overload Capacity	110% Longterm operation, >150% Load operation 200ms	
Battery		
Battery Voltage	±240Vdc	
Charging Power	3kW*N(N is the number of power supply module), Optional 50A charging module (occupied power moduleposition)	
Voltage Accuracy	±1%	
Invert Output		
Rated Voltage	380/400/415Vac	
Power Factor	1	
Rated Frequency	50/60Hz	
Voltage Accuracy	±1.0% @ Balanced load; <+5.0% @ Ubalanced load	
Frequency Accuracy	50/60Hz±0.01%	
Frequency Tracking Range	Settable, ±0.5Hz ~ ±5Hz, Default to ±3Hz	
Voltage Waveform Distortion	THDi<2%(100% Linear load), THDi<4%(Non-linear load)	
3-Phase Accuracy	120°±1°	
Peak Ratio	3:1	
Invert Overload Capacity	<105%, Longterm; <110%, 60 minutes; 110 ~ 125%, 10 minutes; >125 ~ 150%, 1minutes; >150%, 200ms	
System		
Efficiency	≥96% @ Dual Switching Mode	
Inter Face	Touch-screen + LED	
Inline Method	Supports uplink and downlink	
Standards	Safety Standard: IEC62040-1-1; EMC: IEC62040-2; Design & Test: IEC62040-3	
Protection Degree	IP20	
Accessory	Temperature and humidity sensor, Anti seismic component, Lightning protection component, Dust Net, LBS	
Feeder Protection	Standard: Disconnecter, Optional: Fuse	
Communication	RS232/RS485/Modbus/SNMP (Optional)/Editable Dry Contact	
Operating Environment	Operating Temperature: 0~40°C; Relative humidity: 0~95% (No condensing)	
Noise	< 60dB @ 1M	
Elevation	No derating on1000M, >1000M,Power derating by 1% every 100M rise	
Dimensions		
Cabinet L*W*H (mm)	600*1010*2000	
Module L*W*H(mm)	440*690*86(2U)	
Weight		
Cabinet(Kg)	270	
Module(Kg)	25	



Modular UPS

Galaxy Series

G480k & G600k & G720k

- ✓ Efficient and Intelligent
- ✓ Green Technology
- ✓ Stable and Reliable

Smart Design

Leverage intelligent technologies with an enhanced design for utmost efficiency.

Dynamic Sleep Technology

Choose dynamic hibernation based on power usage, supporting rotational rest, and effectively prolonging device life.

Eco-Forward Solutions

Champion eco-friendly, sustainable tech solutions.

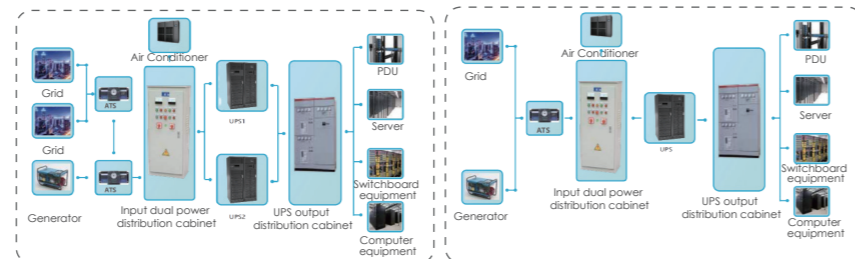
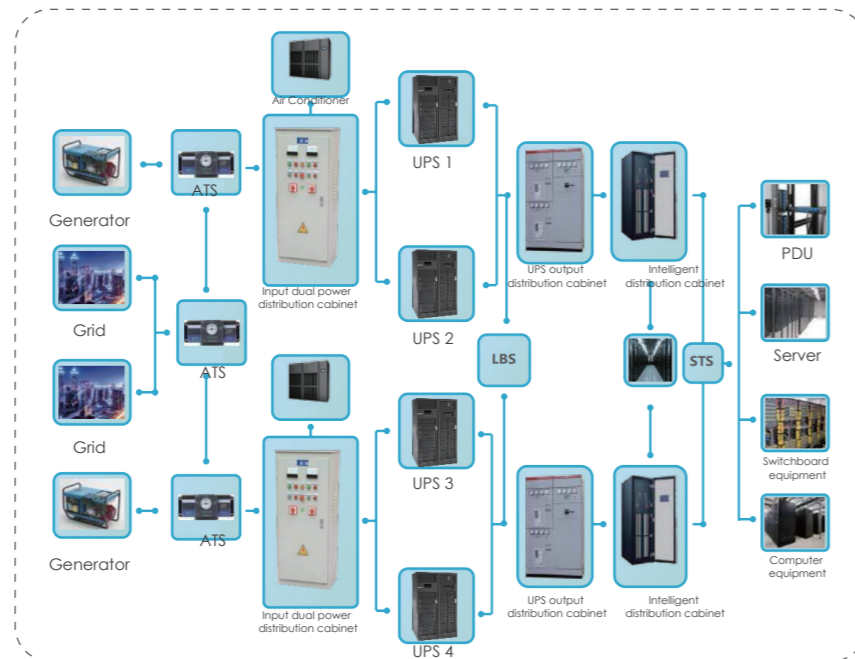
Trustworthy and Sturdy

Supply dependable, durable products ensuring consistent business flow.

Your Green Energy Manufacturer



UPS+Battery



Product Specifications

Model	G480k	G600k	G720k
Rated Capacity	480kVA	600kVA	720kVA
Power module Capacity	40kVA	50kVA	60kVA
Main Circuit			
Layout Manner	3 phases + N lines + PE		
Rated Voltage	380/400/415Vac (line voltage)		
Rated Frequency	50/60Hz		
Voltage Range	304Vac ~ 478Vac (line voltage) Full-load; 304Vac ~ 228Vac(line voltage) Load derating linearly from 80% ~100%>0.99		
Frequency Range	40Hz~ 70Hz		
Power Factor	>0.99		
Current Harmonic Components	THDi<3%(Linear full-load); THDi<5%(Non-linear load)		
Bypass			
Rated Voltage	380/400/415Vac (line voltage)		
Voltage Range	Default to -20%~ +15%; Settable, Upper limit: +10%,+15%,+20%,+25%; Lower limit: -10%,-15%,-20%, -30%,-40%		
Frequency Range	Settable (±1Hz,±3Hz,±5Hz)		
Overload Capacity	110% Longterm operation, >150% Load operation 200ms		
Battery			
Voltage	±192Vdc (384 ~ 528Vdc)		
Charging Power	15%* power supply module		
Voltage Accuracy	±1%		
Invert Output			
Rated Voltage	380/400/415Vac(line power)		
Power Factor	1	1	0.9
Rated Frequency	50/60Hz		
Voltage Accuracy	≤±1.0% @ Balanced load; <±5.0% @ Ubalanced load		
Frequency Accuracy	50/60Hz±0.01%		
Frequency Tracking Range	Settable, ±0.5Hz ~ ±5Hz, Default to ±3Hz		
Voltage Waveform Distortion	THDi≤2%(100% Linear load), THDu≤4%(Non-linear load)		
3-Phase Accuracy	120°±1°		
Ratio of Peak	3:1		
Invert Overload Capacity	<105%, Longterm; <110%, 60 minutes; 110 ~ 125%, 10 minutes; >125 ~ 150%, 1 minutes; >150%, 200ms		
System			
Efficiency	≥96% @ Dual Switching Mode		
Interface	Touch-screen + LED		
Wiring Method	Top Wiring and Bottom Wiring		
Standards	Safety Standard: IEC62040-1-1; EMC: IEC62040-2; Design & Test: IEC62040-3		
Ingress Protection	IP20		
Accessory	Temperature and humidity sensor, Anti seismic component, Lightning protection component, Dust Net, LBS Cable		
Feeder Protection	Standard: Disconnector, Optional: Fuse		
Communication	RS232/RS485/Modbus/SNMP (Optional)/Editable Dry Contact		
Operating Environment	Operating Temperature: 0~40°C; Relative humidity: 0~95% (No condensing)		
Noise	< 60dB @ 1M		
Elevation	No derating on1000M, >1000M,Power derating by 1% every 100M rise		
Dimensions			
Cabinet L*W*H (mm)	1000*1100*2000	1000*1100*2000	1000*1100*2000
Module L*W*H(mm)	440*720*130 (3U)		
Weight			
Cabinet(Kg)	490	500	530
Module(Kg)	34	36	38



Lithium Battery Cabinet

Galaxy Storage Series

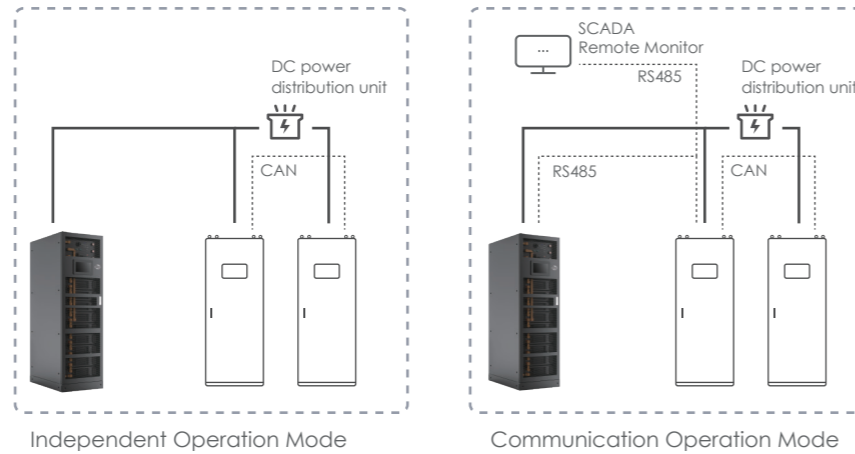
GS-51250 & GS-512100



Product Specifications

Product Model	GS-51250	GS-512100
Nominal voltage	512V (1P160S)	
Nominal capacity	53AH	106AH
Rated charging voltage	3.4*160=544V	
Cell type	3.2V 50AH	
Cell material	LFP	
Cell Connection mode	1P160S	2P160S
Standard charging current	0.2C	
Maximum continuous charging current	1C	
Standard discharge current	1C	1C
Maximum continuous discharge current	4C	4C
Cycle life	> 5000@80%DOD (@ 1C Discharge)	
Protection function	Over charge protection, over discharge protection, short circuit protection, temperature protection, charge over current protection and discharge over current protection, etc	
Environmental Specification		
Operating temperature	charge: 0-45°C discharge: -20-50°C (Recommend temperature 20~25°C)	
Storage temperature	-20-60°C	
Relative humidity	5%-95%	
Altitude	0-2000 meter	
Cooling mode	Fan cooling	
Ingress Protection	IP20	
dimension (Width * depth * height)	600*1000*2200	
Weight	600kg	800kg

System Layout



- ✓ Communication Disconnected
- ✓ Independent Control
- ✓ High Safety
- ✓ Easy to Install
- ✓ Rapid Expansion
- ✓ High Compatibility
- ✓ Adaptability
- ✓ Multiple Communication Forms

High Reliable

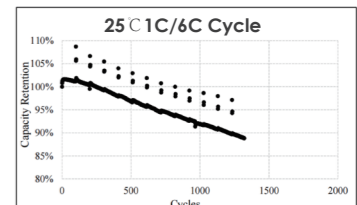
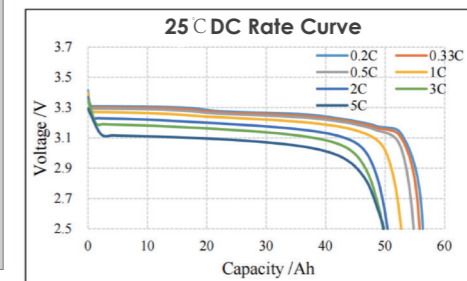
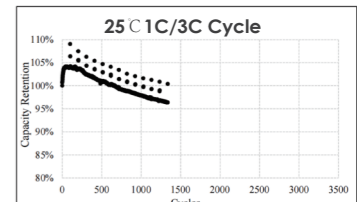
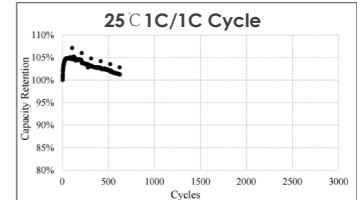
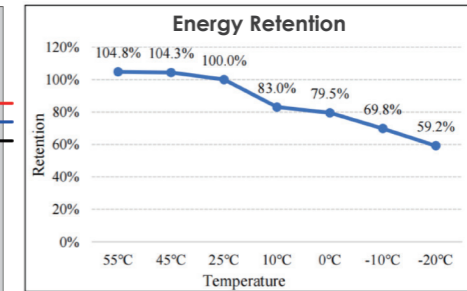
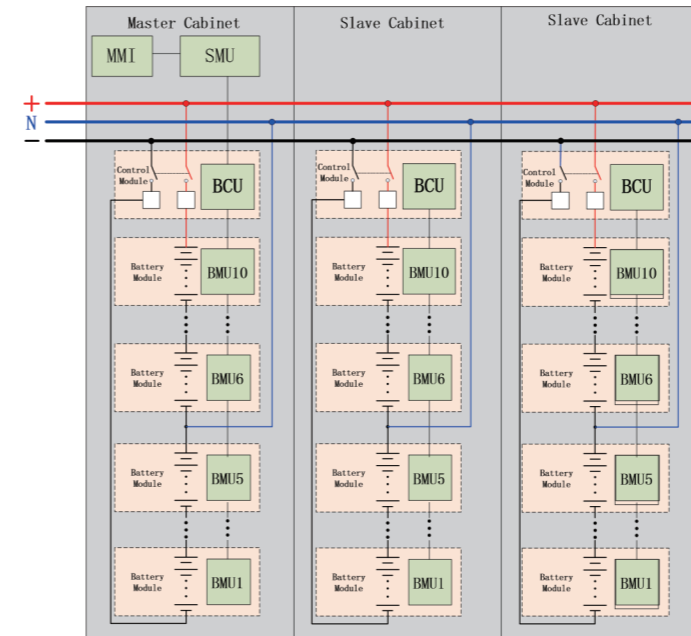
- ▶ Long cycle life, up to 5000 cycles
- ▶ Lithium iron phosphate high-stability batteries, thermal runaway will not catch fire
- ▶ Three-layer BMS to ensure the reliability of lithium batteries
- ▶ Cabinet-level fire protection, precise and rapid fire extinguishing, non-proliferation

High Efficient

- ▶ High energy density, saving 70% of floor space, compared with lead acid batteries
- ▶ Intelligent BMS, saving 80% of daily operation and maintenance costs

Simple

- ▶ Active current sharing technology to support the mixing of old and new batteries, easy to expand
- ▶ Intelligent voltage equilibrium control, supporting the differentiation and mixing of the number of lithium battery modules

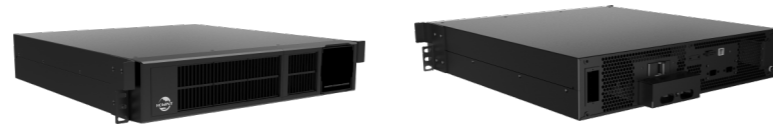




Rack-mount UPS

Venus L Series

V201L & V202L & V203L & V206L



V201L & V202L & V203L & V206L

Features

- ▶ Can operate without batteries
- ▶ Input power factor correction 0.99
- ▶ Output power factor 1.0
- ▶ Efficiency up to 93.5%
- ▶ Optional input voltage range suitable for household appliances and personal computers
- ▶ Overload and short circuit protection
- ▶ 48 V DC system
- ▶ Compatible with utility voltage or generator power
- ▶ Automatically restarts upon AC recovery
- ▶ Can be paralleled with up to 9 units
- ▶ 50A smart battery charger design for optimized battery performance
- ▶ Cold start function

Product Specifications

Model	V201L	V202L	V203L	V206L
Capacity	1000VA/900W	2000VA/1800W	3000VA/2700W	6000VA/6000W
Input				
Nominal Voltage	230VAC			
Voltage Range	160 VAC - 300 VAC @100% load, 110 VAC @ 60% load (Derating)			176VAC 300 VAC @100% load, 110 VAC @ 60% load (Derating)
Frequency Range	40Hz ~ 70Hz			
Power Factor	> 0.99 @ nominal voltage (100% load)			
Input Connection	IEC 320 C14	IEC 320 C20	IEC 320 C20	Terminal
Output				
Output Voltage	220/230/240VAC(Selectable)			
AC Voltage Regulation (Batt. Mode)	±1%			
Frequency Range (Synchronized Range)	57~63Hz or 47~53Hz			56~64Hz or 46~54Hz
Frequency Range (Batt. Mode)	50Hz /60Hz ± 0.1Hz			
Charging Current	5A	10A	10A(if O/P load>95%, CHG current derate to 6A)	10A, 20A, 30A (20A default)
Output Connection	(6) IEC 320 C13	(6) IEC 320 C13	(6) IEC 320 C13 +(1) IEC C19	Terminal
Current Crest Ratio	3:1			
Harmonic Distortion	≤3 % THD (Linear Load) ≤6 % THD (Non-linear Load)		≤ 1% THD (Linear Load) ≤ 4% THD (Non-linear Load)	
Transfer Time	AC to Battery	Zero		
	Inverter to Bypass	4 ms (Typical)		Zero
Waveform (Batt. Mode)	Pure Sinewave			
Overload	Line Mode	<35°C 105-125% 2min ; 125-140% 30sec ;		100~105%, Continue 105-125% 10min ; 125-150% 1min ; >150% immediately
	AC Mode	<35°C 105-120% 1min ; >120% immediately		100-110% 30sec ; 110-130% 10sec ; >130% immediately
EFFICIENCY				
AC Mode	90%			94%
Battery Mode	85%			90%
PHYSICAL				
Dimension, D*W*H (mm)	450 x 438 x 86	500 x 438 x 86	500 x 438 x 86	515 x 438 x 86
Net Weight (kgs)	8	8.8	9.7	19.7
EFFICIENCY				
Operation Humidity	0-95 % RH @ 0- 40°C (non-condensing)			
Noise Level	Less than 50dB @ 1 Meter			Less than 55dB @ 1 Meter
MANAGEMENT				
Smart RS-232/USB	Supports Windows® 2000/2003/XP/Vista/2008, Windows® 7/8, Linux and MAC			
Optional SNMP	Power management from SNMP manager and web browser			



Venus-L +R5000



Rack-mount UPS

Venus L Series

V303L & V305L & V306L



Features

- ▶ Work without battery connection when needed.
- ▶ Innovative design reaches up to 93.5% efficiency for less energy waste.
- ▶ Optimized 48V architecture for reduced current and minimal loss.
- ▶ Up to 9 units can be seamlessly paralleled for capacity expansion.
- ▶ Advanced PFC technology achieves input PF up to 0.99.
- ▶ Supports varied voltage range for versatile home/office use.
- ▶ Smoothly integrates with AC grid supply and generator power.
- ▶ 50A charger delicately charges batteries for optimal performance.
- ▶ Output power factor of 1.0 for clean and stable power quality.
- ▶ Overload and short circuit protection provide industrial-grade safety.
- ▶ Automatically resumes operation when AC power restores.
- ▶ Able to start up and work in low temperature environments.



Venus + R5000

Product Specifications

Model	V303L	V305L	V306L
Power	3000VA/3000W	5000VA/5000W	6000VA/5100W
Input			
Rated voltage	220/230/240VAC		
Voltage range	110-280 VAC (50%load) ; 176-280 VAC (100%load)		
Frequency range	46 ~ 54 Hz or 56 ~ 64HZ		
power factor	> 0.98 @ Rated voltage (100% load)		
THDi	<8%		
Output			
Rated voltage	220/230/240VAC		
Regulation accuracy (battery mode)	±1%		
Frequency Range: Synchronization range	46 ~ 54 Hz or 56 ~ 64Hz		
Frequency Range: Battery mode	50 Hz+0.1 Hz or 60 Hz+0.1 Hz		
THD	<3%THD (Linear load) ; < 5%THD (Nonlinear load)		
Switch Time: Grid to battery	0ms		
Switch Time: Inverter to bypass	4 ms (Typical value)		
Waveform	Pure sine wave		
Efficiency			
Grid mode	93%		
ECO mode	98%		
Battery mode	93%		
Battery			
Battery voltage	48VDC		
float voltage	54VDC		
Charge current (Max)	60A		
Physical Property			
Dimensions (W*D*H)	438*420*132.5mm		
Net weight (kg)	15		
Environment			
Temperature and humidity	0° C~50° C operating temperature; -15° C~60° C storage temperature; 0~95% Relative humidity Relative humidity (non-condensing)		
Management			
Communication interface	RS23, USB		

Product Specifications



Rack-mount UPS

Venus-H Series

V106h



- ✓ High Efficiency and Performance
- ✓ Advanced Protection Features
- ✓ Flexible Power Management
- ✓ Smart Energy Saving and Compatibility
- ✓ User-Friendly Interface and Options
- ✓ Enhanced Functionality

► High Efficiency and Performance

Boasts an impressive efficiency of up to 94%, ensuring minimal energy loss. It also offers a strong overload capability, making it reliable under various conditions.

► Advanced Protection Features

Equipped with built-in back-feed relay and OVCD (Over Voltage Cut-off Device) protection, enhancing safety and durability.

► Flexible Power Management

Features a large charger up to 8A for long-run models, and an output power factor of 1, ensuring efficient power delivery. Additionally, it supports a wide input voltage range from 110 to 300 VAC, making it versatile for different power conditions.

► Smart Energy Saving and Compatibility

Includes an ECO mode for energy saving and is compatible with generators. It also supports SNMP/USB/RS-232 communications for easy integration with existing systems.

► User-Friendly Interface and Options

Offers an optional 2.8" color touched LCD for easy monitoring and control, and adjustable battery numbers for customized usage. Furthermore, it's optionally compatible with Lithium batteries (192~240VDC), providing flexibility in battery choice.

► Enhanced Functionality

Features active input power factor correction of 0.99, a 50Hz/60Hz frequency converter mode, and an Emergency Power Off (EPO) function, adding to its robustness and utility in various scenarios.

MODEL

PHASE	Single phase (L+N+PE)
CAPACITY	6000 VA / 4800 W

INPUT

Nominal Voltage	208*/220/230/240VAC
Voltage Range	110-300VAC ± 3% at 50% load; 176-300VAC ± 3% at 100% load
Frequency Range	46~54Hz / 56~64 Hz
Power Factor	≥ 0.99 @ nominal voltage (100% load)
THDi	≤ 6 % @ 100% load

OUTPUT

Output Voltage	208*/220/230/240VAC
AC Voltage Regulation (Batt. Mode)	± 1%
Frequency Range (Synchronized Range)	46~ 54 Hz or 56 ~ 64 Hz
Frequency Range (Batt. Mode)	50 Hz or 60Hz ± 0.1 Hz
Current Crest Ratio	3:1(max.)
Harmonic Distortion	≤ 2 % THD (Linear Load) / 4 % THD (Non-linear Load)

Transfer Time	AC to Battery	Zero
	Inverter to Bypass	≤ 4 ms (Typical)
Waveform (Batt. Mode)		Pure Sinewave

Overload	AC Mode	100% ≤ load ≤ 105% Warning only; 105% < load ≤ 125% 1min; >125%: 1 sec
	Battery Mode	100% ≤ load ≤ 105% Warning only; 105% < load ≤ 125% 30 sec; >125%: 1 sec

EFFICIENCY

AC Mode	96%(max.)
Battery Mode	93%(max.)

BATTERY

Nominal Voltage	192 VDC
Charging Current	6.0 A (max.)
Charging Voltage	218.4VDC ±1%
Battery Connector	2 Poles (50A max.)

Lithium Battery Pack

Model Name	LIO 192003
Capacity	3 Ah
Nominal DC Voltage	192 VDC
Cell Type and nominal capacity	LiFeO4 and 3.2V/3Ah
Continuous discharge current	30A max.
Battery Connector	2 Poles (50A max.)
Com ports	RS485 (Pack to UPS), CAN (pack to pack)
Capacity extension	YES, max up to 5 packs
Unit Dimension, D x W x H (mm)	550 x 438 x 44

INDICATORS & COM

LCD	Load level, Battery level, AC mode, Battery mode, Bypass mode, and Fault indicators
Communication ports	USB, Mini Slot
Emergency Power Off (EPO)	YES

ALARM

Battery Mode	Sounding every 4 seconds
Low Battery	Sounding every second
Overload	Sounding twice every second
Fault	Continuously sounding

PHYSICAL

Unit Dimension, D x W x H (mm)	550 x 438 x 44
Net Weight (kgs)	12.5
Package Dimension, D x W x H (mm)	650 x 550 x 100
Gross Weight (kgs)	14.3

ENVIRONMENT

Humidity	0-95 % RH @ 0- 40°C (non-condensing)
Noise Level	Less than 55dBA @ 1 Meter
Altitude	0~2000meters without derating; 2000~3000 meters, derating 1% every 100meters; >3000 meters, not working

MANAGEMENT

USB	Supports Windows 2000/2003/XP/ Vista/2008/7/8, Linux, Unix, and MAC
Optional SNMP	Power management from SNMP manager and web browser
Optional WiFi module	App for Wifi linking

Product Specifications



Rack-mount UPS Venus-H Series

V206h & V210h



Application areas

- ✓ Postal Communications
- ✓ Financial Securities
- ✓ Government Agencies
- ✓ Energy and Chemical Industries
- ✓ Transportation
- ✓ Commerce and Taxation
- ✓ Healthcare
- ✓ Military and Defense etc.

Your Green Energy Manufacturer

- ▶ **Efficient Power Management**
This product boasts a high efficiency of up to 94%, active input power factor correction of 0.99, and an output power factor of 1, ensuring optimal power usage and conversion.
- ▶ **Enhanced Safety Features**
It includes built-in Over Voltage Cut-Off (OVCD) protection and a back-feed relay, enhancing the safety and reliability of the device.
- ▶ **Versatile Charging Options**
The product offers a large charger up to 8A for longrun models and is optionally compatible with Lithium batteries (192~240VDC), providing flexible charging solutions.
- ▶ **Advanced Operational Modes**
It features a 50Hz/60Hz frequency converter mode, ECO mode for energy saving, and an Emergency Power Off (EPO) function, catering to various operational needs.
- ▶ **Broad Compatibility**
The device is generator compatible, offers a wide input voltage range (110-300 VAC), and supports SNMP/USB/RS-232 communications, ensuring it can be integrated into various setups.
- ▶ **User-Friendly Interface**
An optional 2.8" color touch LCD enhances user experience, and the adjustable battery numbers offer additional customization for specific power needs.

Model	V206h	V210h
PHASE	1 phase in / 1 phase out	
CAPACITY	6000 VA / 6000 W	10000 VA / 10000 W

INPUT		
Nominal Voltage	208/220/230/240 VAC	
Voltage Range	110~300VAC ± 3 % at 50% load 176~300VAC ± 3 % at 100% load	
Frequency Range	46~54 Hz or 56~64 Hz 40 ~ 70 Hz (In generator mode)	
Power Factor	≅ 0.99 @ full load	
THDi	< 4% @100% Load ; < 6% @50% Load	

OUTPUT		
Output Voltage	208*/220/230/240 VAC	
AC Voltage Regulation (Batt. Mode)	± 1%	
Frequency Range (Synchronized Range)	46~54 Hz or 56~64 Hz	
Frequency Range (Batt. Mode)	50 Hz ± 0.1 Hz or 60 Hz ± 0.1 Hz	
Current Crest Ratio	3:1 (max.)	
Harmonic Distortion	≅ 1 % THD (Linear Load) ; ≅ 4 % THD (Non-linear Load)	
Transfer Time	AC to Battery	Zero
	Inverter to Bypass	Zero
Waveform (Batt. Mode)	Pure Sinewave	
Overload	AC Mode	100-105% Continue, 105-125% for 10 min, 125%~150% 0.5min, >150% immediately
	Battery Mode	100-110% 3min, 110-130% for 0.5 min, >130% immediately

PHYSICAL		
Dimension, D*W*H (mm)	515 * 438 * 88	
Net Weight (kgs)	11	12 V / 9 AH

ENVIRONMENT		
Operating Humidity	20-95 % RH @ 0- 40°C (Non-condensing)	
Noise Level	Less than 55dB @1Meter	Less than 58dB @1Meter

EFFICIENCY		
AC Mode	94%	
Battery Mode	92%	

BATTERY		
Battery Type	LS Series Lithium battery	
Long-run Model	Charging Current	1A/2A/4A/6A/8A
	Charging Voltage	192VDC

MANAGEMENT		
Smart RS-232/USB	Supports Windows® Family, Linux and MAC	
Optional SNMP	Power management from SNMP manager and web browser	



Product Specifications



Rack-mount UPS Venus Series

V315h & V420h &
V330h & V340h & V460h



Application areas

- ✓ Postal Communications
- ✓ Financial Securities
- ✓ Government Agencies
- ✓ Energy and Chemical Industries
- ✓ Transportation
- ✓ Commerce and Taxation
- ✓ Healthcare
- ✓ Military and Defense etc.

Your Green Energy Manufacturer

- ▶ **Advanced Power Conversion and Display Technology**
This series boasts true double-conversion technology for reliable power delivery. The larger models (10K-40K) feature an LCD screen that auto-rotates based on the rack position, enhancing usability and monitoring.
- ▶ **Energy-Efficient Operations and Safety Provisions**
It includes an ECO mode for energy-saving operations and an Emergency Power Off (EPO) function for immediate power shutdown in emergencies, enhancing both efficiency and safety.
- ▶ **High-Performance DSP Technology and Full Power Delivery**
The integration of DSP (Digital Signal Processor) technology ensures top-notch performance. Furthermore, the series achieves an output power factor of 1, indicating efficient power usage.
- ▶ **Versatile Compatibility and Flexible Power Options**
The series is generator compatible, supports dual AC inputs, and allows for adjustable battery numbers. This flexibility ensures it can adapt to a wide range of power sources and configurations.
- ▶ **Comprehensive Power Management Features**
The RH series comes with active power factor correction across all phases and offers a 50Hz/60Hz frequency converter mode. These features contribute to stable and adaptable power management under various conditions.
- ▶ **Parallel Operation and Optional Isolation Transformer**
It supports parallel operation with a common battery, enhancing scalability and redundancy. Additionally, an optional isolation transformer can be added for full electrical isolation and enhanced noise rejection.

Model	V315H	V420H	V330H	V340H	V460H
PHASE	3-phase in / 3-phase out				
CAPACITY	15KVA/15KW	20KVA/20KW	30KVA/30KW	40KVA/40KW	60KVA/60KW
PARALLEL CAPABILITY	4				

INPUT	
Nominal Voltage	3 x 400 VAC (3Ph+N) or 208*/220/230/240 VAC (Ph-N)
Voltage Range	190-520 VAC (3-phase) @ 50% load ; 305-478 VAC (3-phase) @ 100% load
Frequency	46~54 Hz or 56~64Hz
Power Factor	≤0.99 @ 100% load

OUTPUT	
Output Voltage	3 x 360*/380/400/415 VAC (3Ph+N) or 208*/220/230/240 VAC (Ph-N) 3 x 360*/380/400/415 VAC (3Ph+N)
AC Voltage Regulation (Batt. Mode)	± 1%
Frequency Range (Synchronized Range)	46~54Hz or 56~64Hz
Frequency Range (Batt. Mode)	50 Hz ± 0.1 Hz or 60 Hz ± 0.1 Hz
Current Crest Ratio	3:1 (max.)
Harmonic Distortion	≅ 2 % THD (Linear Load) ; ≅ 5 % THD (Non-linear Load)
Transfer Time	Zero
Waveform (Batt. Mode)	Pure Sinewave
Overload	AC Mode 100-110% for 60 min, 110-125% for 10 min, 125%~150% 1min, >150% immediately Battery Mode 100-110% for 60 min, 110-125% for 10 min, 125%~150% 1min, >150% immediately

BATTERY	
Battery Type	LS Series Lithium battery
Charging Current (max.)	1A~12A(Adjustable) 1A~16A(Adjustable) 1A~18A(Adjustable)
Charging Voltage	± 192 VDC

PHYSICAL	
Dimension, D x W x H (mm)	680 x 438 x 133 [3U] 797x438x176[4U]
Net Weight (Kgs)	30 30 32 34 45

ENVIRONMENT	
Operating Temperature	0-40°C
Operating Humidity	< 95 % and non-condensing
Noise Level	Less than 65dB @ 1 Meter Less than 70dB @ 1 Meter

EFFICIENCY	
AC Mode	95.5%
ECO Mode	98.5%
Battery Mode	94.5%

MANAGEMENT	
Smart RS-232/USB	Supports Windows® family, Linux and MAC
Optional SNMP	Power management from SNMP manager and web browser

"*When output voltage is set as 3 x 360VAC or 208 VAC, the output power of the unit will be de-rated to 90%. . Product specifications are subject to change without further notice."



Product Specifications



Rack-mount UPS Venus Storage Series

VS-9650 & VS-19250 & VS-38450



Features

Flexible Installation Options

Supports both front and rear maintenance installation for flexibility.

Scalable Configuration

Allows parallel expansion to meet high capacity needs.

Seamless Firmware Upgrades

One-click firmware upgrade to stay up-to-date.

Intelligent BMS for Enhanced Protection

Next-gen smart BMS for enhanced monitoring and protection.

Flexibility

Compatible with dual/three-Bus outputs, meeting the needs of all mainstream dual-Bus and three-Bus UPS configurations.

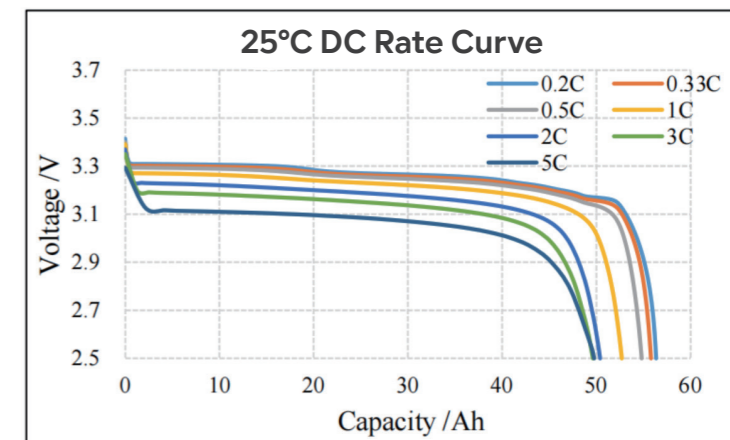
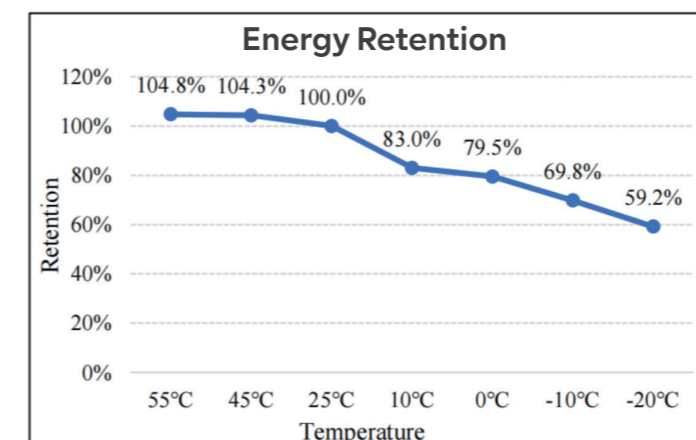
Superior Electrical Performance

Supports continuous 4C discharge, meeting the optimal current requirements of data centers.

Precise Status Monitoring

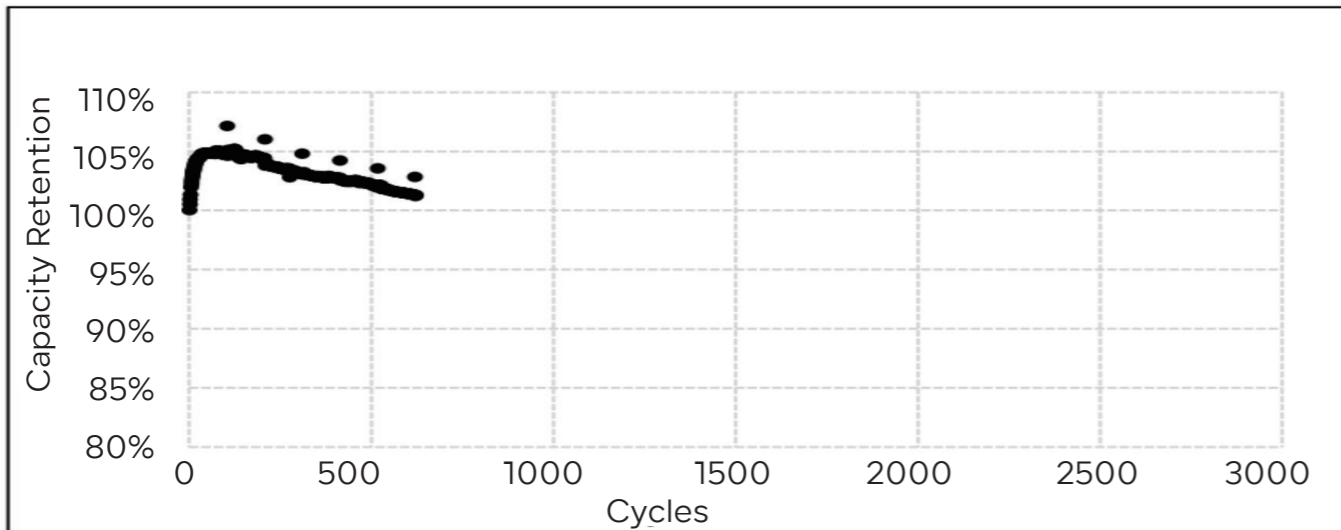
RS485 & CAN communication for precise status tracking.

Model	VS-9650	VS-19250	VS-38450
Nominal voltage	96V(30S)	192V(60S)	384V(120S)
Nominal capacity	53Ah	53Ah	53Ah
Rated charging voltage	3.4*30=102V	3.4*60=204V	3.4*120=408V
Cell type		3.2 53AH	
Cell material		LiFePO4	
Cell Connection mode	1P30S	1P60S	1P120S
Standard charging current		0.2C	
Maximum continuous charging current		1C	
Standard discharge current		1C	
Maximum continuous discharge current		4C	
Cycle life		5000times @80%DOD(@1C Discharge)	
Protection function		Over-charging protection, over-discharging protection, short-circuit protection, temperature protection, charging/discharge over-current protection, etc.	
Operating temperature		Charge: 0-45°C Discharge: -20-50°C	
Storage temperature		-20-60°C	
Relative humidity		5%-95%	
Altitude		0-2000m	
Cooling mode		Fan Cooling	
Ingress Protection		IP20	
Charge and discharge		Spray black overall	
Dimension (W*D*H)	(440*850*132)*1mm	(440*850*132)*2mm	(440*850*132)*4mm
Parallel Capacity		4	

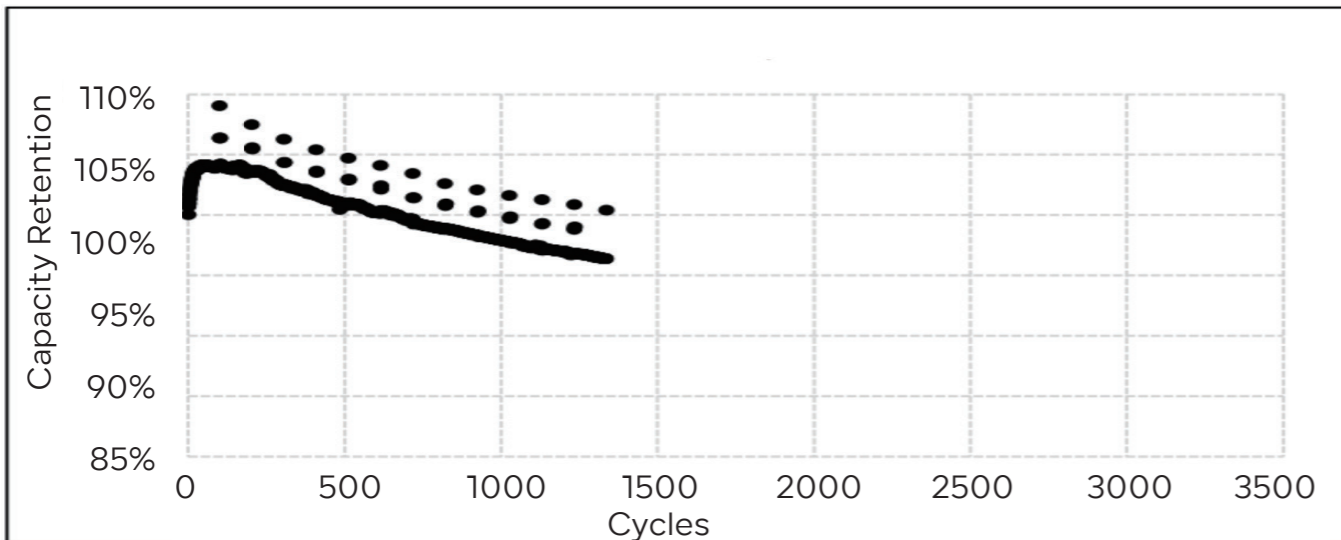


Product Specifications

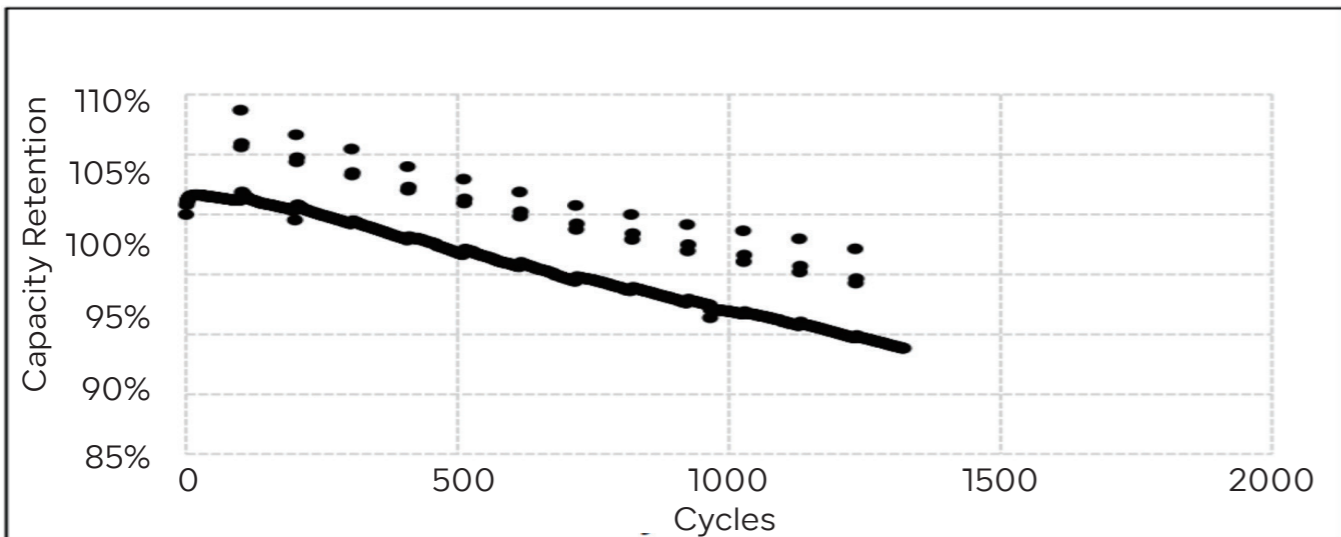
25°C 1C/1C Cycle



25°C 1C/3C Cycle



25°C 1C/6C Cycle



Rack-mount Battery R5000

ENERGY STORAGE SYSTEM

R5000 series home photovoltaic energy storage system is a new type of lithium iron phosphate battery, equipped with battery management system (BMS), which has long life span, optimized sizes with high energy density, flexibly applied in residential and commercial scenarios.



Battery

Battery Chemistry	Lithium Iron Phosphate
Cell Capacity (Ah)	100
Nominal Energy (kWh)	4.8
Default Voltage (V)	48
Voltage Range (V)	41.25 ~ 54.75
Max. Operation Current (A)	95
Primary Overcurrent Protection (A)	98@10S
Secondary Overcurrent Protection (A)	120@2S
Max. Charging Voltage (V)	54.8
Discharge Cut-off (V)	40.5
Recommended Charging Voltage (V)	53.3

General Parameters

Parallel Capacity	Maximum 31 units
Dimension (W*D*H)	440*420*132mm
Net Weight (Approximate)	45kg
Storage Conditions	-20°C to 55°C(0°C to 35°C/ Recommended) Up to 90%RH, non-condensing Initial SoC: 50%
Operating Temperature	Discharge: -20°C to 50°C Charge: 0°C to 50°C
Cooling	Natural Cooling
Max. Operating Altitude	2000m
Cycle Life	8000 Cycles
Communication	RS485/CAN/WiFi

System Characteristic

Battery Compliances	IEC 62619, UN 38.3, UL1973, CE-RED, UKCA
Installation Method	Rack Mounting
Installation Scene	Indoor
Enclosure	IP20
Warranty [1]	10 Years